

Barcode Label Editor Software Installation and Use

1. Software Download

(1) Access URL: https://www.mhtclouding.com/mht/service_en.html#driver

(2) Click Software Download → Click MHT-L1091 Windows Tag Editing Software → Click Download

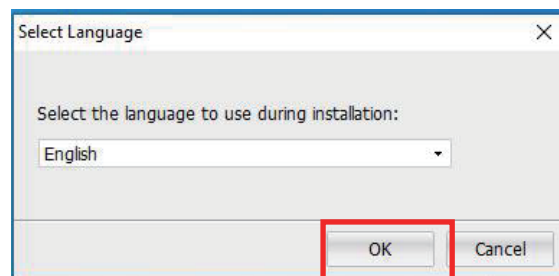
click "Download"

2. Software installation

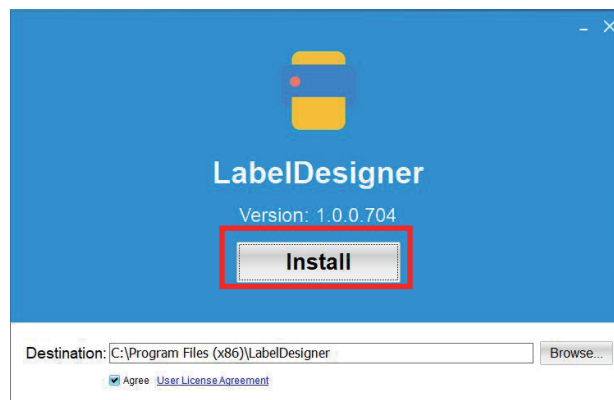
(1) Double-click the label editing software;



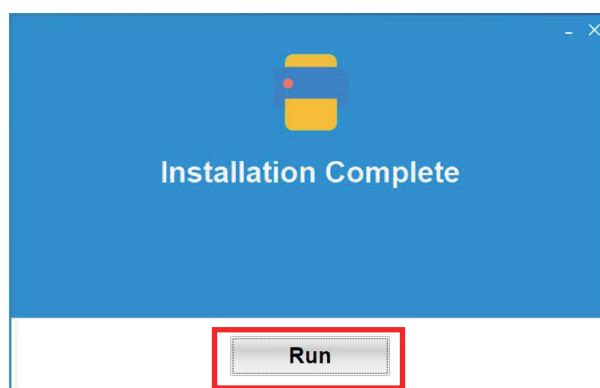
(2) Select the language to be used and click "OK";



(3) Click "Install" Now.



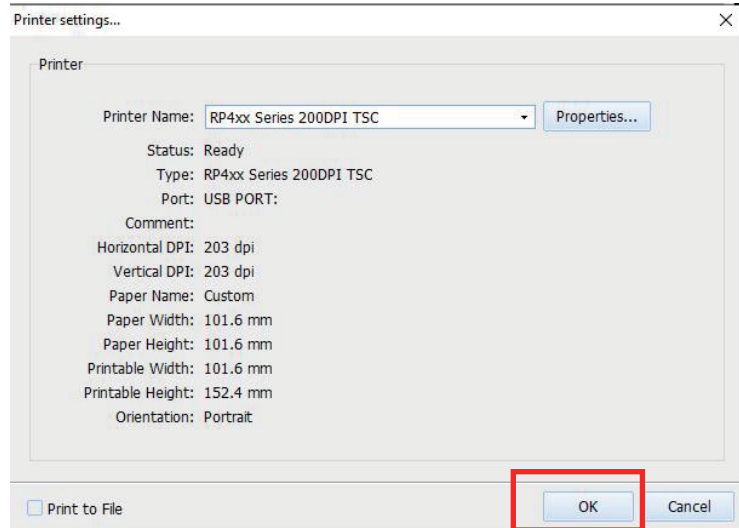
(4) Click "Run" Now to complete the installation.



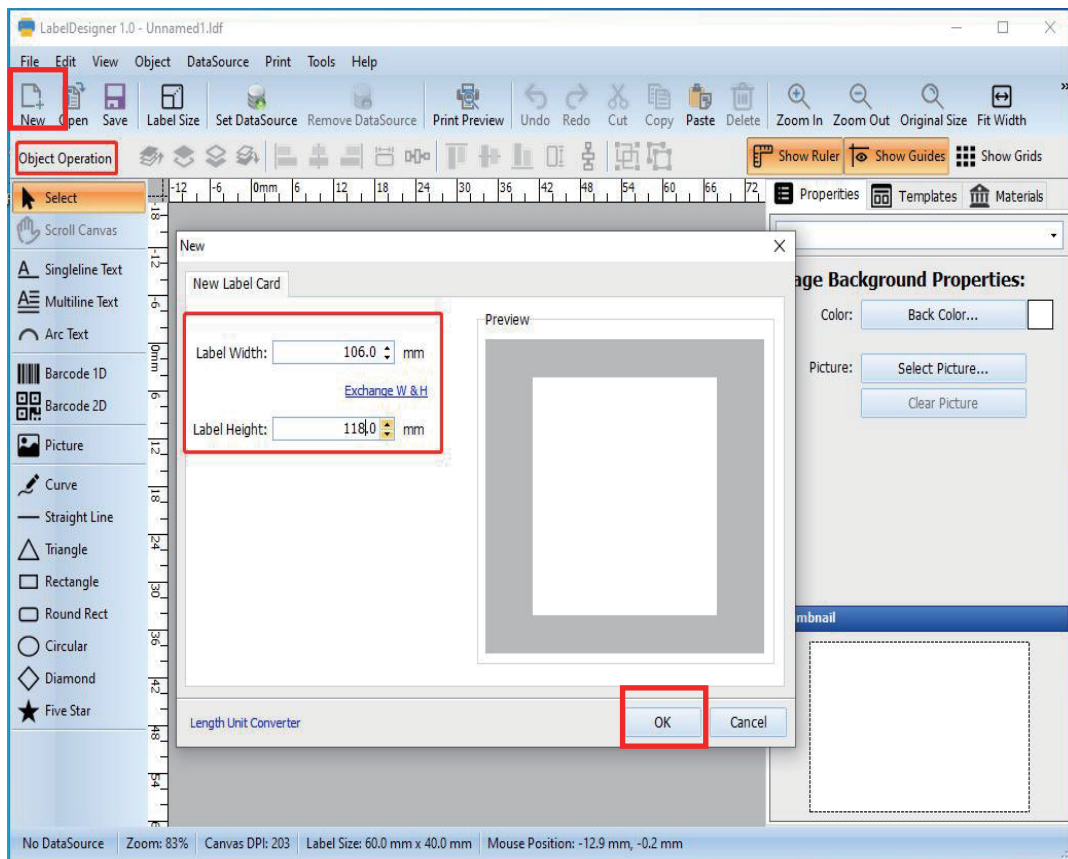
3. Use of label editing software



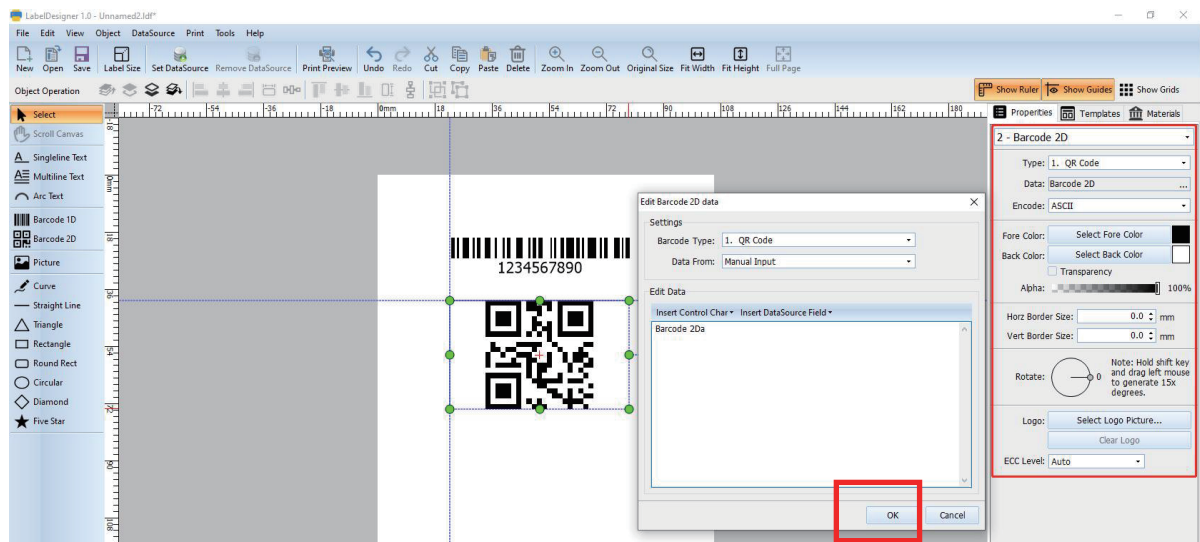
- (1) Double-click "LabelDesigner" to pop up the following dialog box, select the installed printer driver, and click "OK".



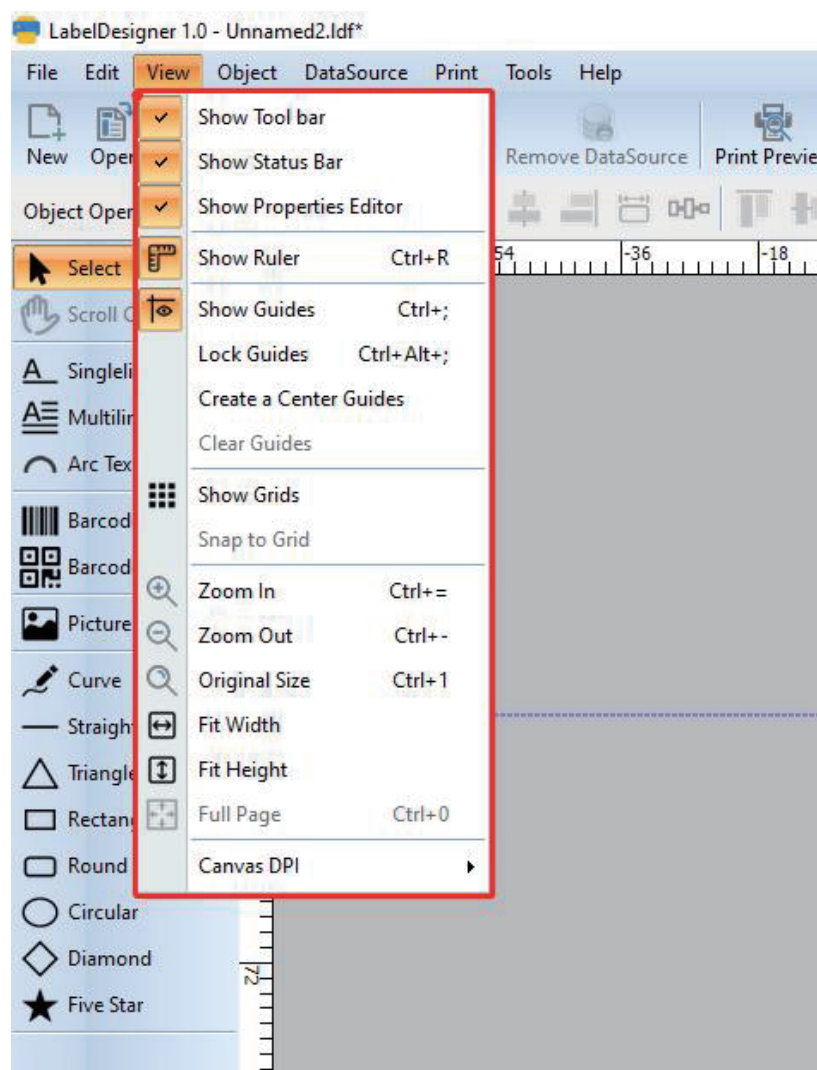
- (2) Select "New" in the upper left corner of the title bar, enter the actual label size, and click "OK".



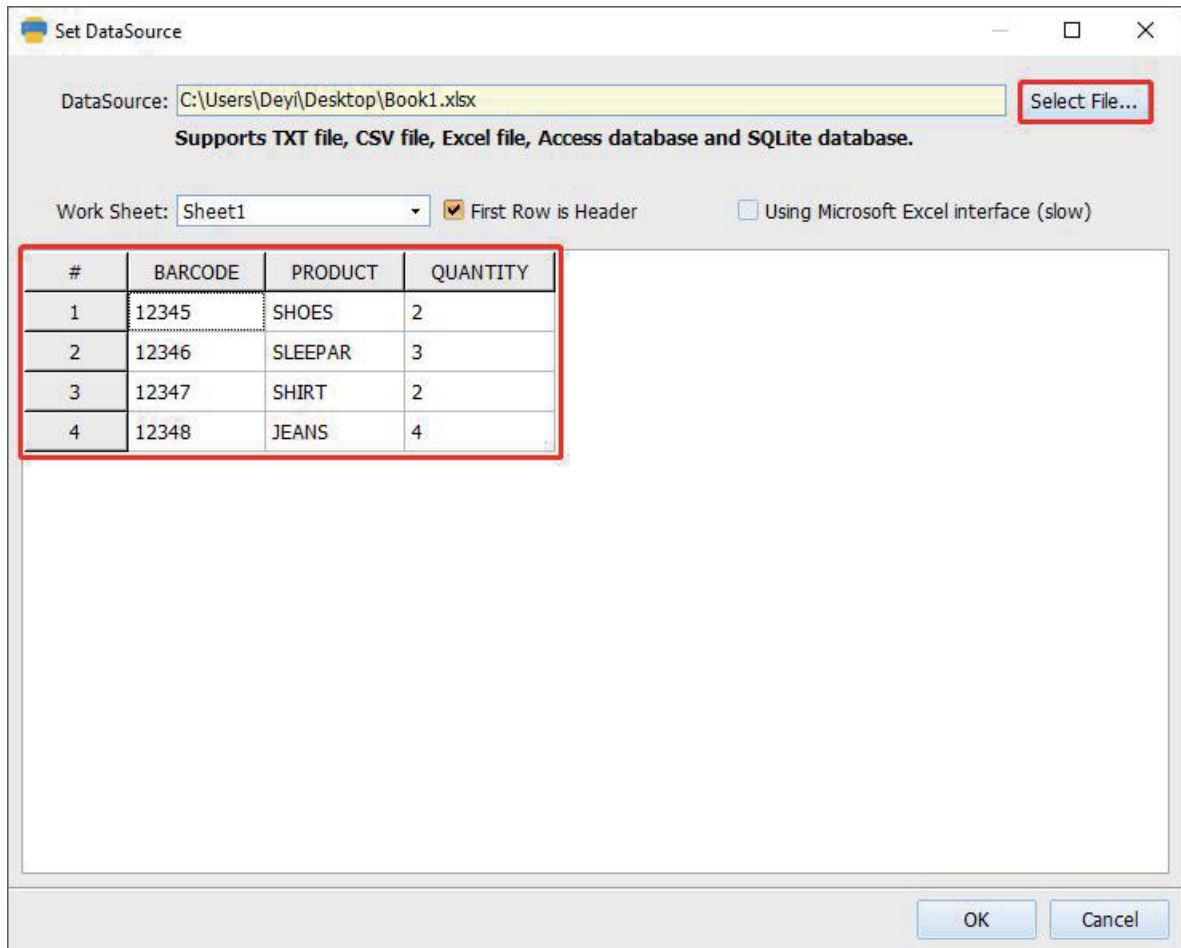
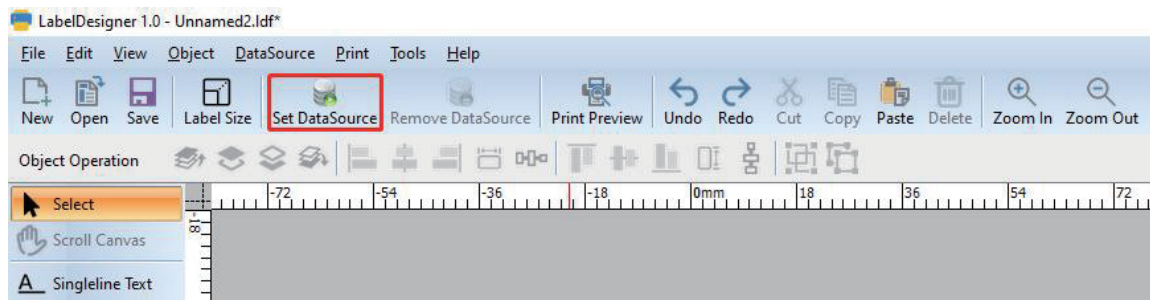
(3) According to the left toolbar to edit text or draw graphics, the right property bar can change the parameter information, as shown in the following figure.



(4) Click "Toolbar" and "View", check the box in front of it below it to show it, uncheck it to hide it, and check the Settings according to operation requirements.



(5) Click the toolbar "Set data source", you can select the data source file to edit and set.



(6) If both the driver and the printer support RFID, RFID can be read and written.



RFID Settings (EPC class 1 Gen 2 (128 bit))

RFID Parameters

EPC Write Settings

TID Write Settings

User Data Write Settings

RFID Access Control

EPC Write Settings

☒ Write data to this area during printing

Data Type: ASCII

ASCII Data: Direct Input 123456789abcdefg

ASCII data can contain up to 16 characters

OK Cancel

RFID Settings (EPC class 1 Gen 2 (128 bit))

RFID Parameters

EPC Write Settings

TID Write Settings

User Data Write Settings

RFID Access Control

RFID Access Control

Lock Control

EPC Area Lock Control: Keep Original Settings

TID Area Lock Control: Keep Original Settings

User Data Area Lock Control: Keep Original Settings

Access Password Lock Control: Keep Original Settings

Kill Password Lock Control: Keep Original Settings

Access Password Settings

Access Password: Password Format: ASCII String Password Content:

Modify Access Password As: ASCII String

Modify Kill Password As: ASCII String

Note: ASCII password content can contain up to 4 characters; The hexadecimal password content can contain up to 4 hexadecimal pairs (00-FF).

RFID Mode

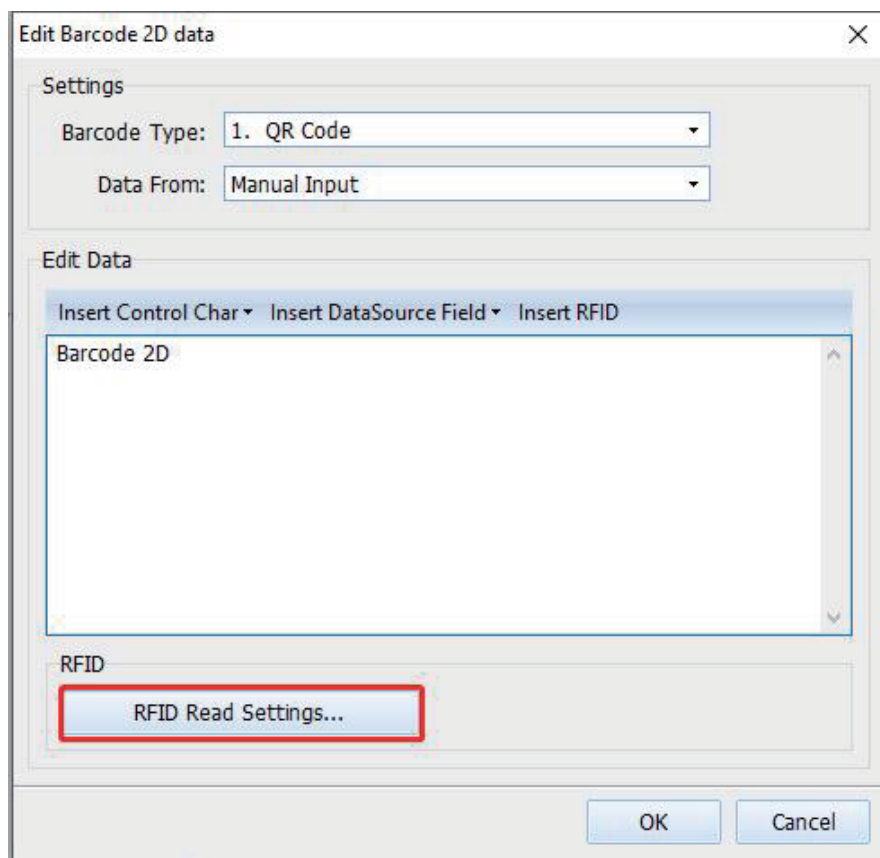
☒ Read or write RFID only

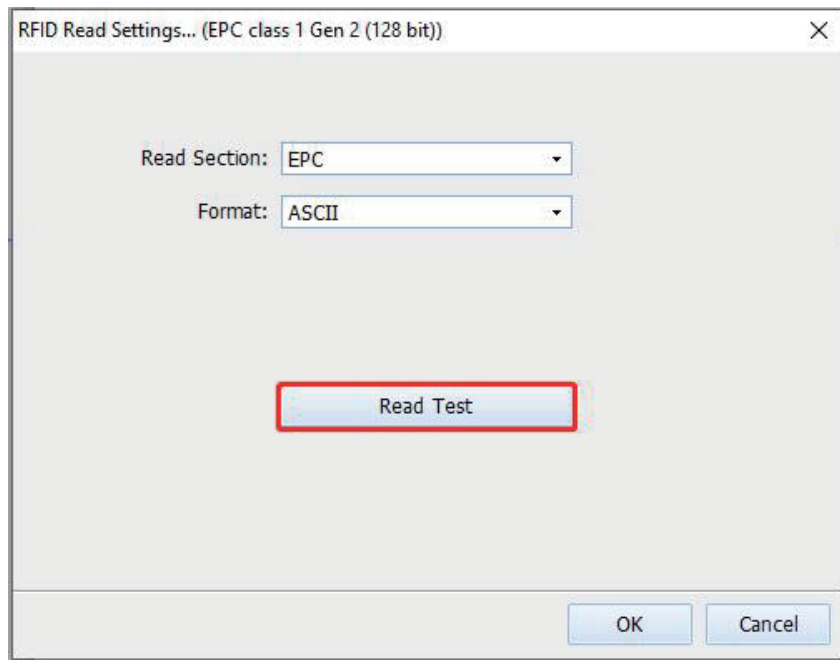
☐ Print Label and read/write RFID

☐ Normal Printing

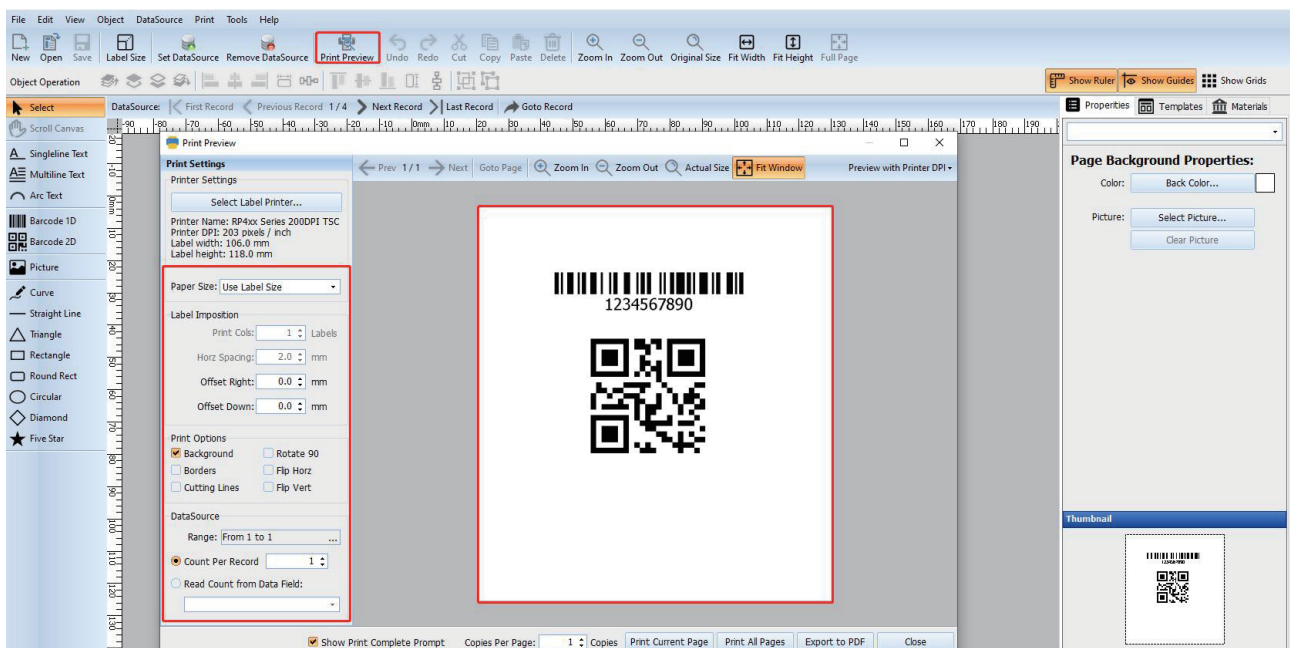
OK Cancel

(7) Double click the data area to read the RFID.

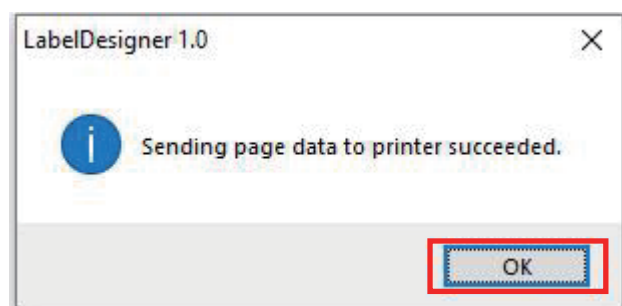




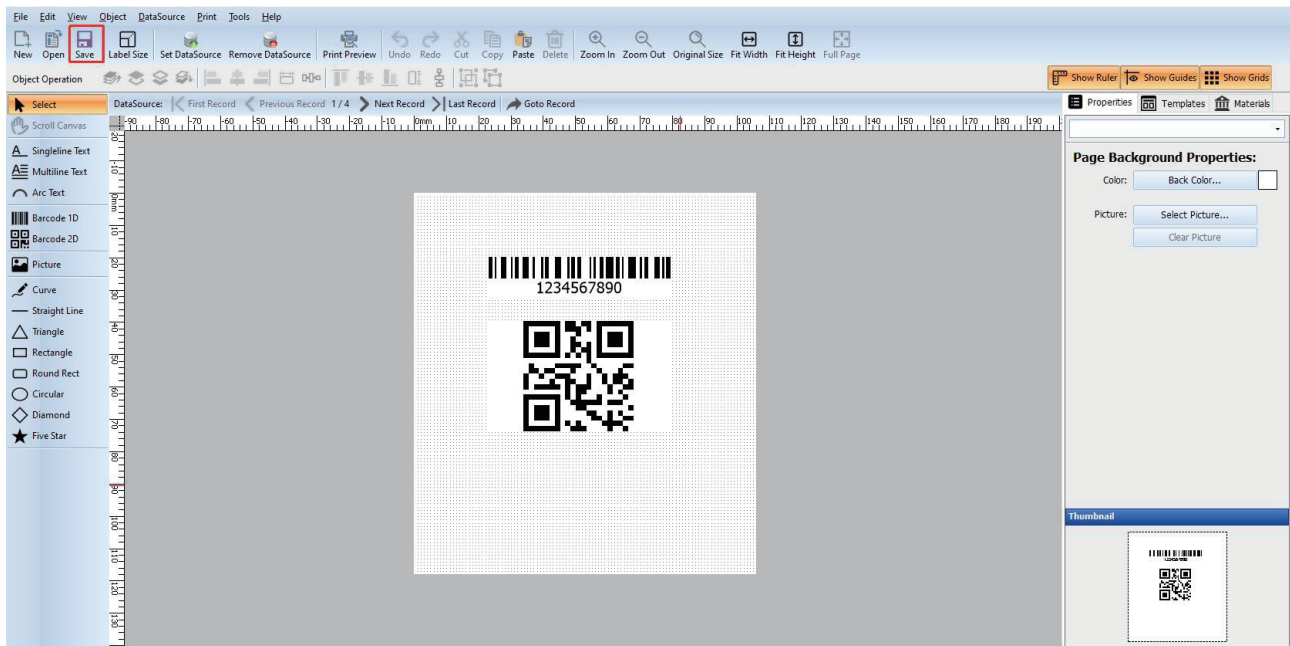
(8) If the content information is edited well, select "Print preview" in the title bar -- select "Print current page"; If the preview print effect is not satisfactory, you can set it by "label layout" and "Print options" in the left setting bar of the preview interface.



(9) If the following interface is displayed, the printing is successful.



(10) If you need to save the current edit label template, select "Save" in the title bar to save to your computer.



(11) If you need to open the previously saved file, please open the "Barcode Label Printing System" software first. Then select "Open" in the title bar, as shown in the following figure, find the previously saved LDF file, select "Open" to open the previously saved label template.

